

POPULATION

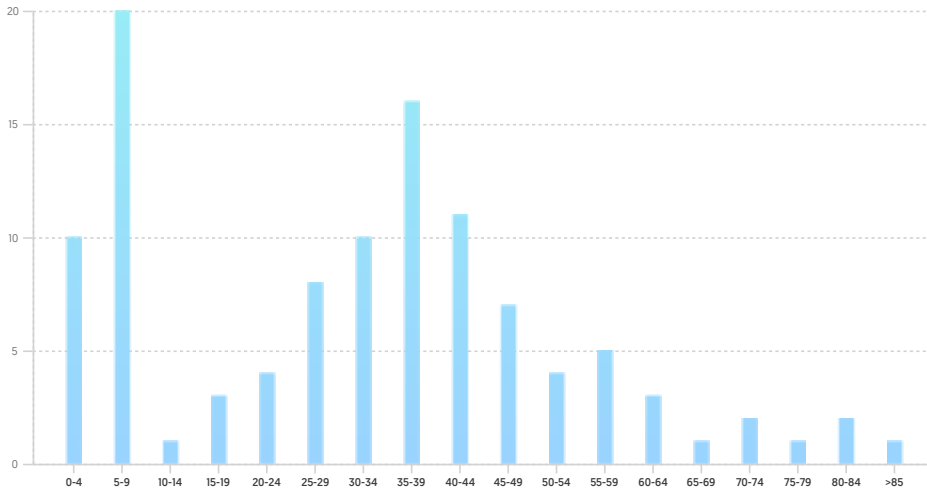
SUMMARY

Estimated Population	9,368
Population Growth (since 2010)	41.7%
Population Density (ppl / mile)	15,366
Median Age	35.9

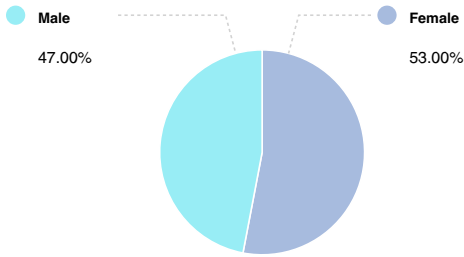
HOUSEHOLD

Number of Households	4,345
Household Size (ppl)	2
Households w/ Children	1,989

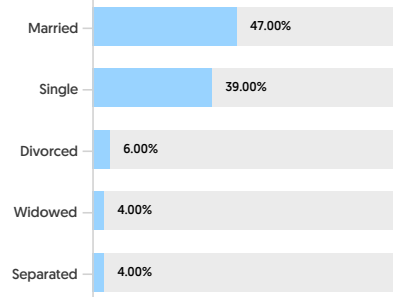
AGE



GENDER



MARITAL STATUS



HOUSING

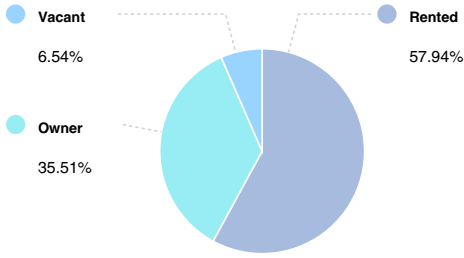
SUMMARY

Median Home Sale Price	\$981,000
Median Year Built	2007

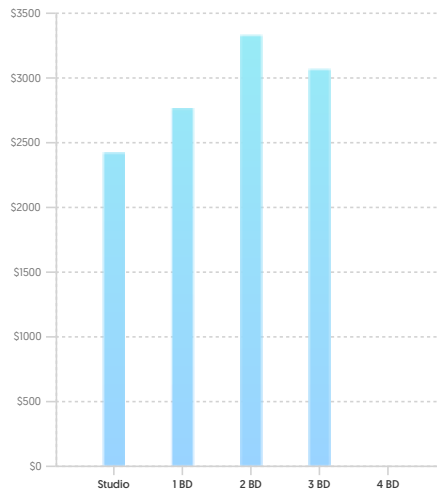
STABILITY

Annual Residential Turnover	26.85%
-----------------------------	--------

**OCCUPANCY**



**FAIR MARKET RENTS (COUNTY)**

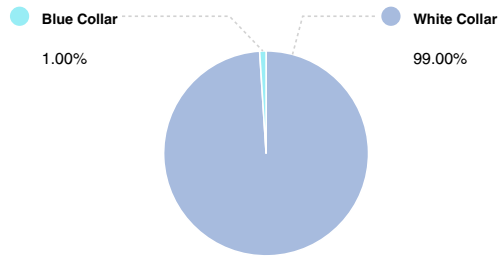


**QUALITY OF LIFE**

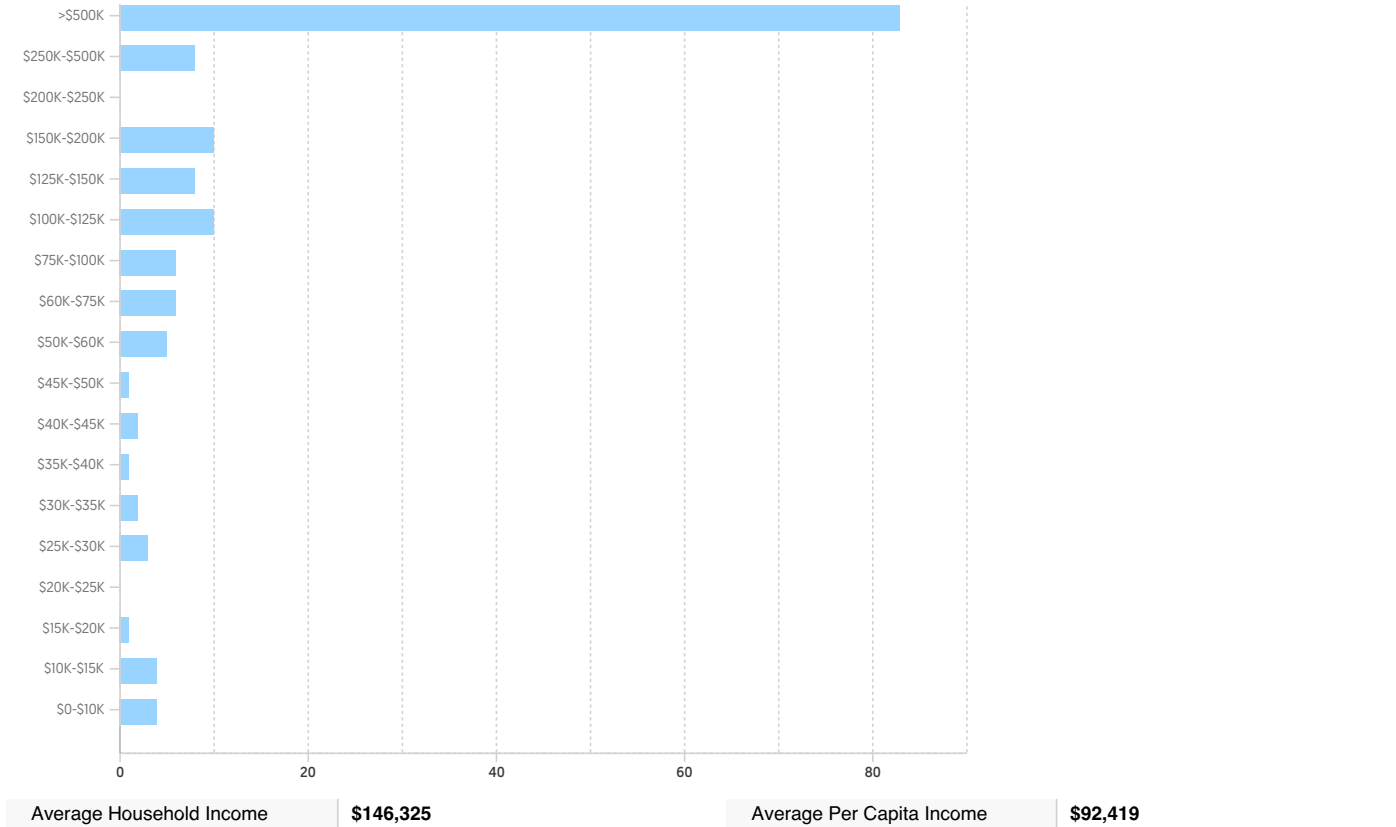
**WORKERS BY INDUSTRY**

Construction	119
Manufacturing	281
Transportation and Communications	71
Wholesale Trade	69
Retail Trade	194
Finance, Insurance and Real Estate	468
Services	1,710
Public Administration	28

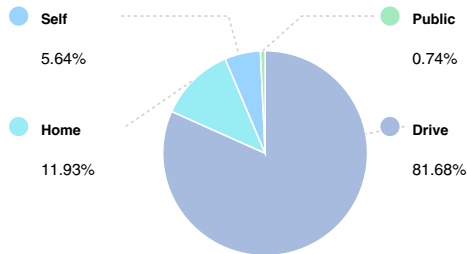
**WORKFORCE**



**HOUSEHOLD INCOME**



**COMMUTE METHOD**



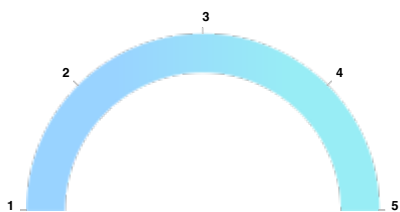
Median Travel Time **29 min**

**WEATHER**

January High Temp (avg °F)	<b>65.1</b>
January Low Temp (avg °F)	<b>47.8</b>
July High Temp (avg °F)	<b>77.9</b>
July Low Temp (avg °F)	<b>62.7</b>
Annual Precipitation (inches)	<b>13.93</b>

**EDUCATION**

**EDUCATIONAL CLIMATE INDEX (1)**



**HIGHEST LEVEL ATTAINED**

Some High School	<b>13</b>
High School Graduate	<b>125</b>
Some College	<b>831</b>
Associate Degree	<b>384</b>
Bachelor's Degree	<b>3,091</b>
Graduate Degree	<b>2,692</b>

(1) This measure of socioeconomic status helps identify ZIP codes with the best conditions for quality schools. It is based on the U.S. Census Bureau's Socioeconomic Status (SES) measure with weights adjusted to more strongly reflect the educational aspect of social status (education 2:1 to income & occupation). Factors in this measure are income, educational achievement and occupation of persons within the ZIP code. Since this measure is based on the population of an entire ZIP code, it may not reflect the nature of an individual school.  
 (2) Powered by Liveby. Information is deemed reliable but not guaranteed. Copyright © 2021 Liveby. All rights reserved.

**SCHOOLS**

**RADIUS: 1 MILE(S)**

**PUBLIC - ELEMENTARY**

	Distance	Grades	Students	Students per Teacher	SchoolDigger.com Rating (1)
Playa Vista Elementary	<b>0.38</b>	<b>K-6th</b>	<b>594</b>	<b>24</b>	<b>4</b>
Ocean Charter	<b>0.9</b>	<b>K-8th</b>	<b>521</b>	<b>26</b>	<b>4</b>
Goethe International Charter	<b>0.95</b>	<b>K-8th</b>	<b>406</b>	<b>18</b>	<b>4</b>

**Community Rating (2)**

Playa Vista Elementary	
Ocean Charter	
Goethe International Charter	

**PUBLIC - MIDDLE/HIGH**

	Distance	Grades	Students	Students per Teacher	SchoolDigger.com Rating (1)
Animo Westside Charter Middle	<b>0.41</b>	<b>6th-8th</b>	<b>426</b>	<b>21</b>	<b>2</b>
Marina Del Rey Middle	<b>0.9</b>	<b>6th-8th</b>	<b>569</b>	<b>20</b>	<b>1</b>
Ocean Charter	<b>0.9</b>	<b>K-8th</b>	<b>521</b>	<b>26</b>	<b>4</b>
Goethe International Charter	<b>0.95</b>	<b>K-8th</b>	<b>406</b>	<b>18</b>	<b>4</b>

**Community Rating (2)**

Animo Westside Charter Middle	
Marina Del Rey Middle	<b>3</b>
Ocean Charter	

PRIVATE

	Distance	Grades	Students	Classrooms	Community Rating (2)
Westside Neighborhood School	0.26	Pre-K-8th	450		

(1) SchoolDigger Ratings provide an overview of a school's test performance. The ratings are based strictly on test score performance for that state's standardized tests. Based on a scale of 1-5. (© 2006-2016 SchoolDigger.com)  
 (2) The community rating is the overall rating that is submitted by either a Parent/Guardian, Teacher, Staff, Administrator, Student or Former Student. There will be only one rating per school. Based on a scale of 1-5.  
 (3) Powered by Liveby. Information is deemed reliable but not guaranteed. Copyright © 2021 Liveby. All rights reserved

<b>LOCAL BUSINESSES</b>	<b>RADIUS: 1 MILE(S)</b>
-------------------------	--------------------------

**EATING - DRINKING**

	Address	Phone #	Distance	Description
Gulp Playa Vista, Inc.	13020 Pacific Promenade #	(310) 569-1484	0.09	Eating Places
International Coffee & Tea, LLC	13020 Pacific Promenade	(310) 862-5725	0.09	Coffee Shop
Piknik Restaurant	13020 Pacific Promenade #	(310) 496-3966	0.09	Family Restaurants
Restaurant Piknic	13020 Pacific Promenade #	(310) 496-3967	0.09	Eating Places
Sweet Fish Sushi Bar, Inc.	13020 Pacific Promenade #	(424) 228-2298	0.09	Sushi Bar
Monosson Subway Inc.	13044 Pacific Promenade	(310) 745-7911	0.1	Sandwiches And Submarines Shop
Beyond Taste, LLC	6020 Seabluff Dr Unit 414	(208) 209-7075	0.1	Eating Places
Mangen Enterprises, Inc.	6099 Seabluff Dr	(310) 417-8225	0.12	Fast-Food Restaurant, Chain
Mangen Group, Inc.	6099 Seabluff Dr	(310) 417-8225	0.12	Fast-Food Restaurant, Chain
Mrkt At The Reserve LLC	13031 W Jefferson Blvd	(310) 301-8072	0.14	Caterers

**SHOPPING**

	Address	Phone #	Distance	Description
Christine Avanti Nutrition, Inc	6020 Seabluff Dr Unit 326	(310) 795-9203	0.1	Health Foods
Yummy Foods, LLC	6020 Seabluff Dr Ste 7	(310) 862-9790	0.1	Grocery Stores, Independent
Home Depot U.s.a., Inc.	12975 W Jefferson Blvd	(310) 822-3330	0.14	Home Centers
Common Foods LLC	5340 Alla Rd Ste 140	(775) 773-6637	0.24	Gourmet Food Stores
Body Ecology, Inc.	5825 W Seaglass Cir	(706) 715-3505	0.26	Health And Dietetic Food Stores
Irwin Naturals	5310 Beethoven St	(888) 223-1548	0.35	Health And Dietetic Food Stores
Stone Source, LLC	5429 McConnell Ave	(323) 274-1992	0.39	Warehouse Club Stores
Forest Redpoint Products Inc	5410 McConnell Ave	(310) 822-7771	0.4	Flooring, Wood
Whole Foods Market, Inc.	12746 W Jefferson Blvd #	(310) 862-9900	0.47	Supermarkets, Chain
The Compleat Food Group International Inc	12655 W Jefferson Blvd	(424) 354-7654	0.59	Food And Freezer Plans, Meat